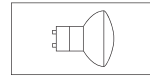
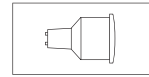
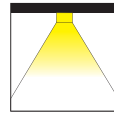


# Forza-Cilindro



led  
SYSTEM



Luminarias de superficie de pequeño tamaño, fabricadas en fundición de aluminio, para su uso con placa de LEDs de potencia, lámparas QPAR16 y CFL50 a 230V. Su diseño minimalista y fácil instalación permiten integrarlas en gran variedad de entornos: entradas y zonas de paso, salas de estar, hoteles, restaurantes, bares y comercio en general.

Small-sized surface luminaires, made of aluminium smelting for use with power LED plate and 230V QPAR16 and CFL50 lamps. Its minimalist design and easy installation permits integration into wide variety of environments: entrances and passage areas, lounges, hotels, restaurants, bars and shops in general.



Cilindro LEDs



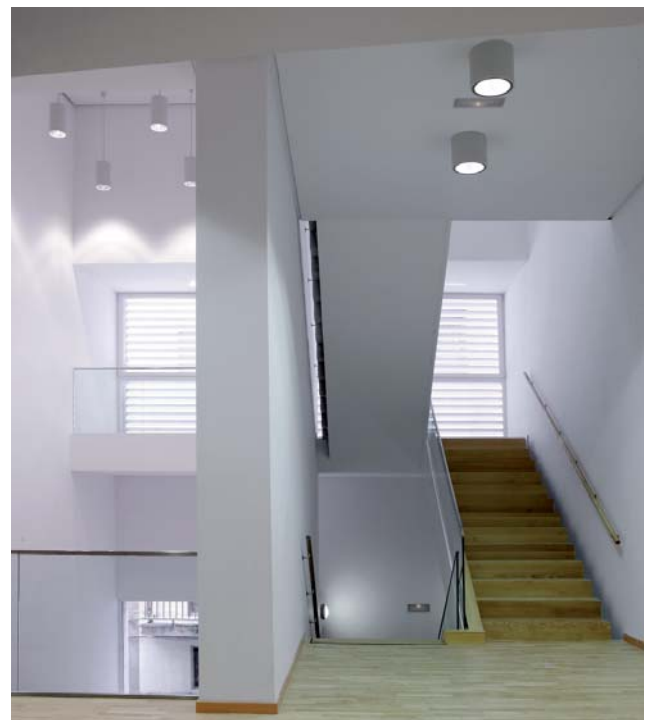
Cilindro



Forza LEDs

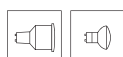
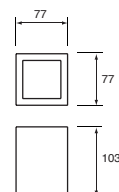


Forza



**Forza LEDs<sup>(1)</sup>**

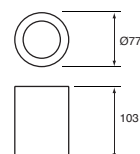
	Potencia Wattage	mA	Peso Weight
<b>D455 F</b>	6 LEDs F x 1,2W	350	0,5 kg
<b>D455 C</b>	6 LEDs C x 1,2W	350	0,5 kg

**Forza<sup>(2)</sup>**

	Potencia Wattage	Lámpara Lamp	Casquillo Lampholder	Peso Weight
<b>LM1025</b>	max 1x75W/230V	QPAR16	GU10	0,38 kg
<b>LM1025</b>	max 1x11W/230V	CFL50	GU10	0,38 kg

**Cilindro LEDs<sup>(1)</sup>**

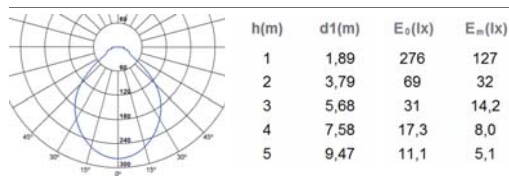
	Potencia Wattage	mA	Peso Weight
<b>D465 F</b>	6 LEDs F x 1,2W	350	0,5 kg
<b>D465 C</b>	6 LEDs C x 1,2W	350	0,5 kg

**Cilindro<sup>(2)</sup>**

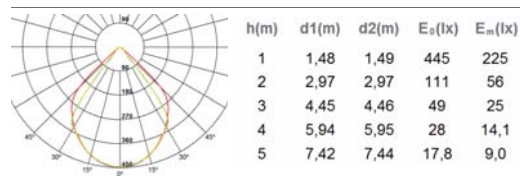
	Potencia Wattage	Lámpara Lamp	Casquillo Lampholder	Peso Weight
<b>LM1024</b>	max 1x75W/230V	QPAR16	GU10	0,38 kg
<b>LM1024</b>	max 1x11W/230V	CFL50	GU10	0,38 kg

**Cilindro LED F**

Cd/klm Max:276 CIE: 62/88/96/100/53,5

**Cilindro 50W 40°**

Cd Max:800 CIE: 83/96/99/100/100

**Acabados / Finishes**

01. blanco / white

07. aluminio / aluminium

<sup>(1)</sup> Opcional para modelos QPAR16 y CFL50 / optional for QPAR16 and CFL50 models

**LA.** lámparas QPAR16 y CFL50 / QPAR16 and CFL50 lamps

<sup>(2)</sup> Lámpara de LEDs incluida para modelos de LEDs / LED lamps included for LED models

○ F LEDs en blanco frío de 1,2W a 350 mA / 1,2W cool-white LEDs, 350 mA

○ C LEDs en blanco cálido de 1,2W a 350 mA / 1,2W warm-white LEDs, 350 mA

<sup>(3)</sup> Opciones de equipamiento eléctrico para esta luminaria (incluidas de serie) / Electrical equipment options for this luminaire (included in this series)

**RE.** driver electrónico de alimentación a 350 mA / electronic driver with current output of 350 mA